

Oven Software Installation for Windows Vista (HC2 controller)

(Software version 5.0.x.x)

Basic System requirement:

OS: Windows Vista

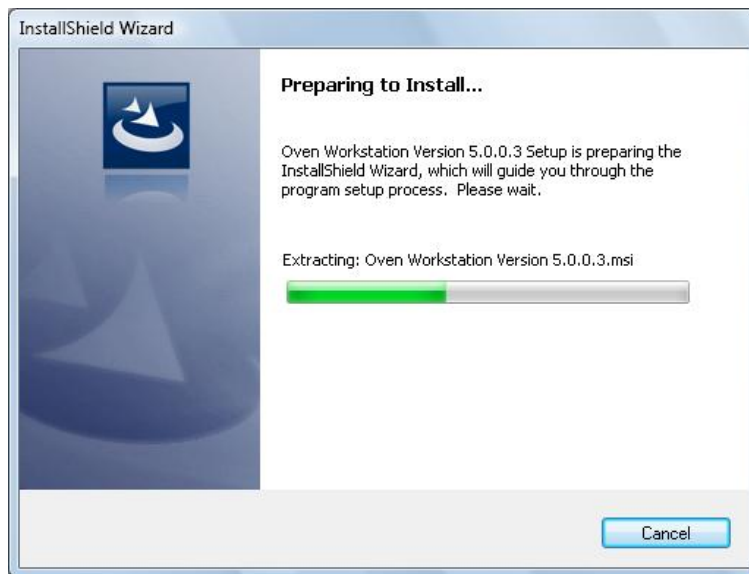
Processor speed: preferred 2GHz or more

RAM: 1GB minimum

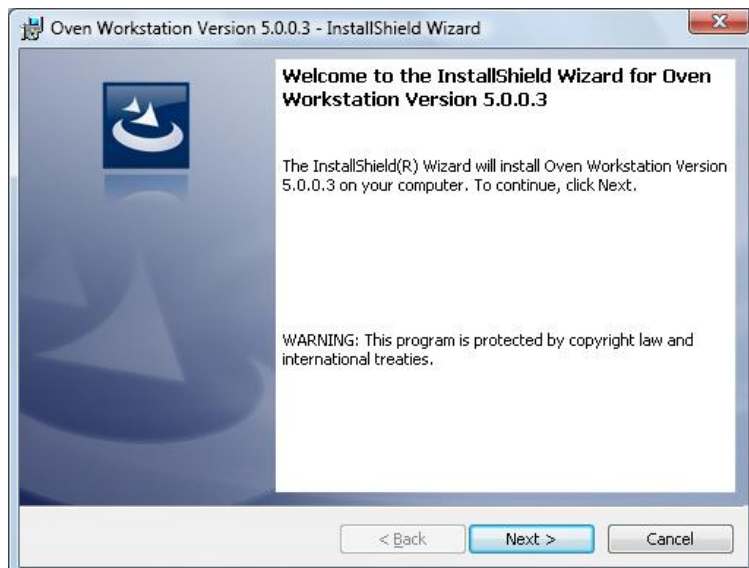
Communication using: Ethernet (TCP/IP) port for HC2 controller

Note: Make sure to uninstall any existing oven software version before installing new software version. Follow separate instructions for uninstalling oven software.

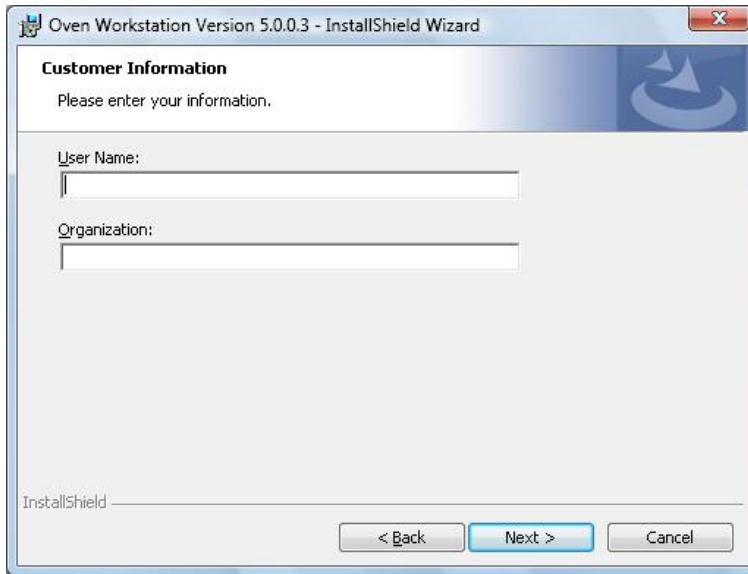
1. Run the setup file from the software installation CD or a drive folder.
Installation screens will appear as



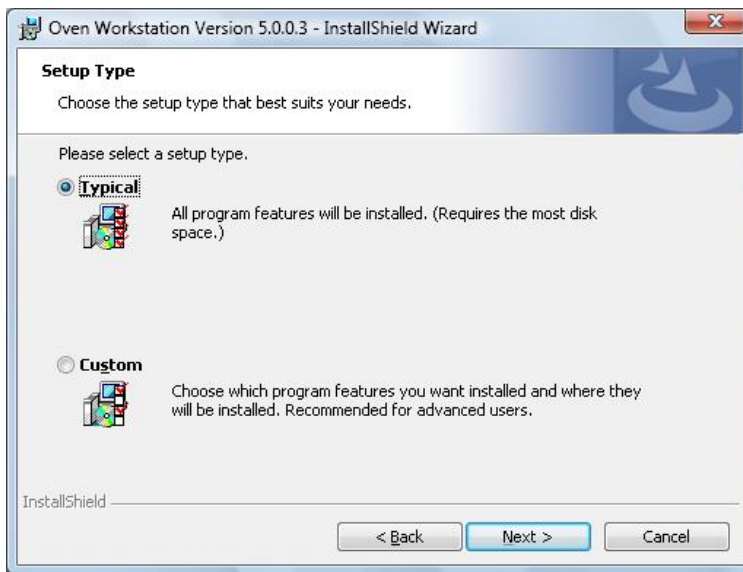
2. Click "Next >" to continue installation



3. Type user name, organization name and click “Next >”



4. Keep Setup Type as Typical

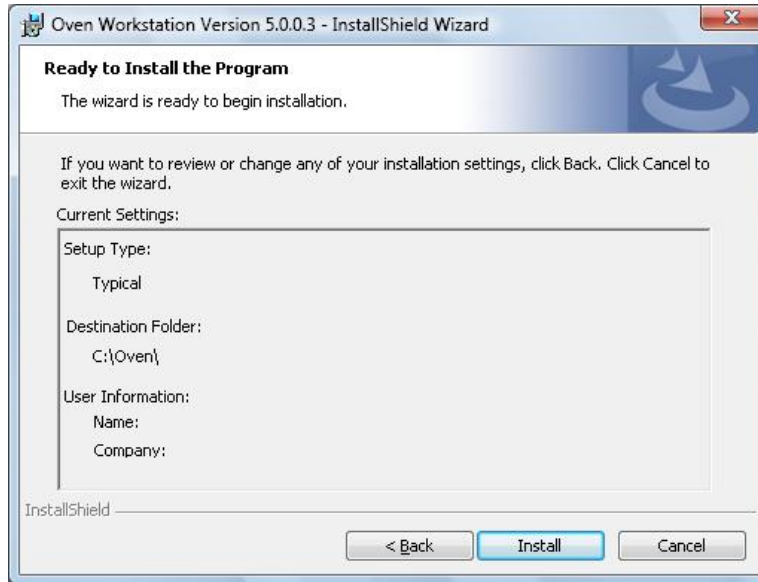


Note: Select Custom setup type only when Korean language setup wizard is needed.

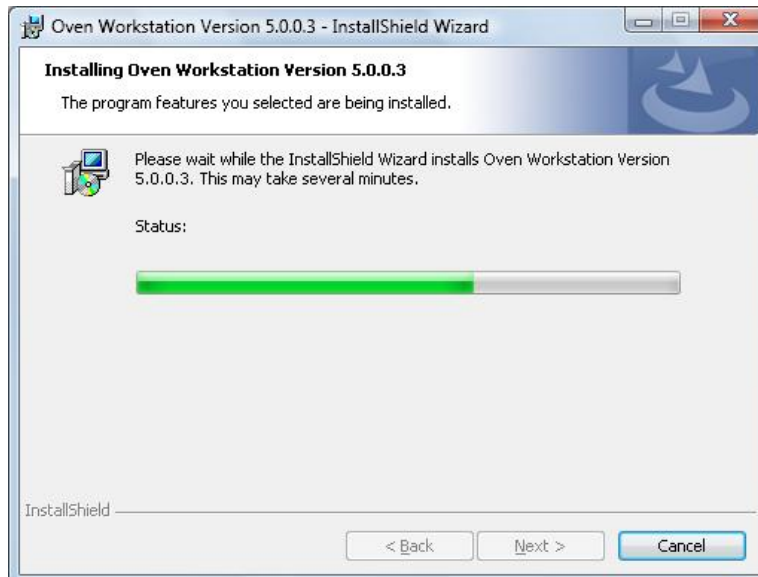
Oven Software Installation for Windows Vista (HC2 controller)

(Software version 5.0.x.x)

5. Review the installation settings and click “Install”.



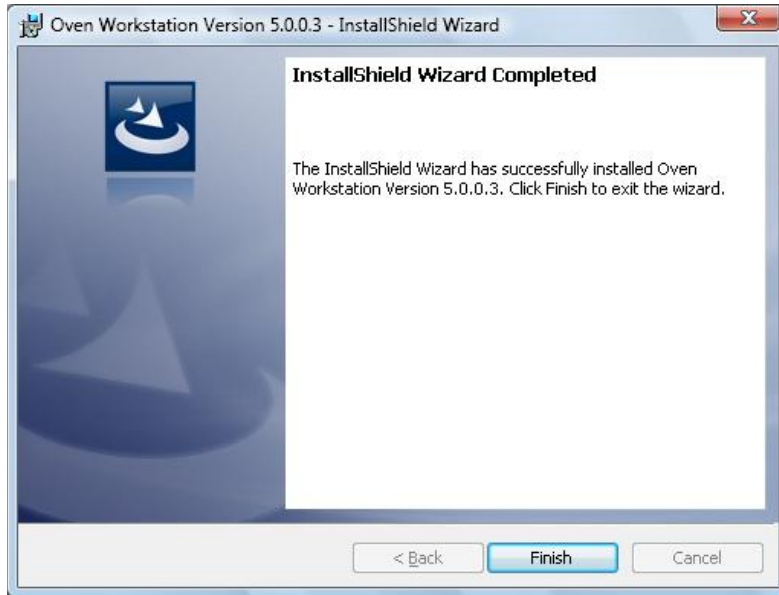
6. Installation status screen and completion screen will appear.



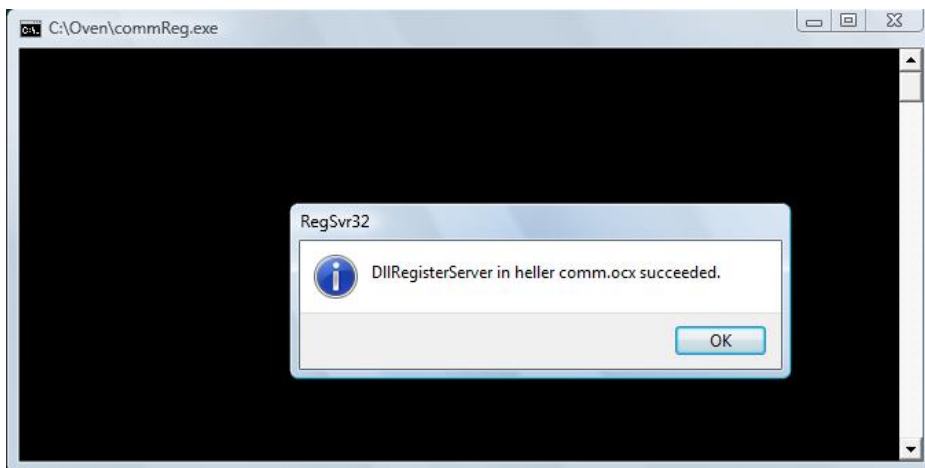
Oven Software Installation for Windows Vista (HC2 controller)

(Software version 5.0.x.x)

7. Click on “Finish” to complete installation.



8. Setup program will register “heller comm.ocx” file to windows registry server.
Click “OK” on the display message.



9. Restart the computer after installation is complete.
10. Before running the “Oven Operating Program”, “Oven Setup Wizard” needs to run to configure the oven options.
Start > All Programs > Oven Workstation > Oven Setup Wizard,
Default user=oven, password=oven.

Oven Software Installation for Windows Vista (HC2 controller)

(Software version 5.0.x.x)

11. After Setup Wizard is complete, update the HC2 driver version by running
C:\Oven\Drivers\Hc2DriverUpdate.exe.

Refer “HC2 controller driver version check” section for more information.

Notes:

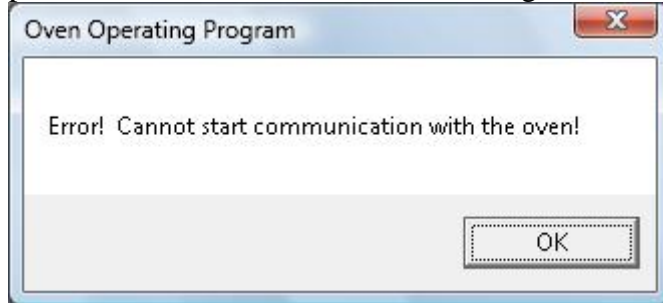
- Use RJ-45 network patch cable for communication with HC2 controller.
 - Default IP address of main HC2 controller is: 192.168.10.250. This is set in setup wizard, DO NOT CHANGE.
 - Set Computer IP address as: 192.168.10.1. Refer “Setting up computer IP address” section below.
 - To Run the Oven Operating Program in DEMO mode –
 - Change the target in “Oven Operating Program” desktop shortcut properties to add DEMO as
"C:\Oven\Oven Operating Program.exe" DEMO
-

Oven Software Installation for Windows Vista (HC2 controller)

(Software version 5.0.x.x)

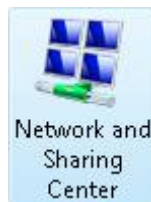
Setting up computer IP address: 192.168.10.1

Note: If computer IP address is not set properly or network cable is not connected or power to HC2 controller is off, following error message will display.



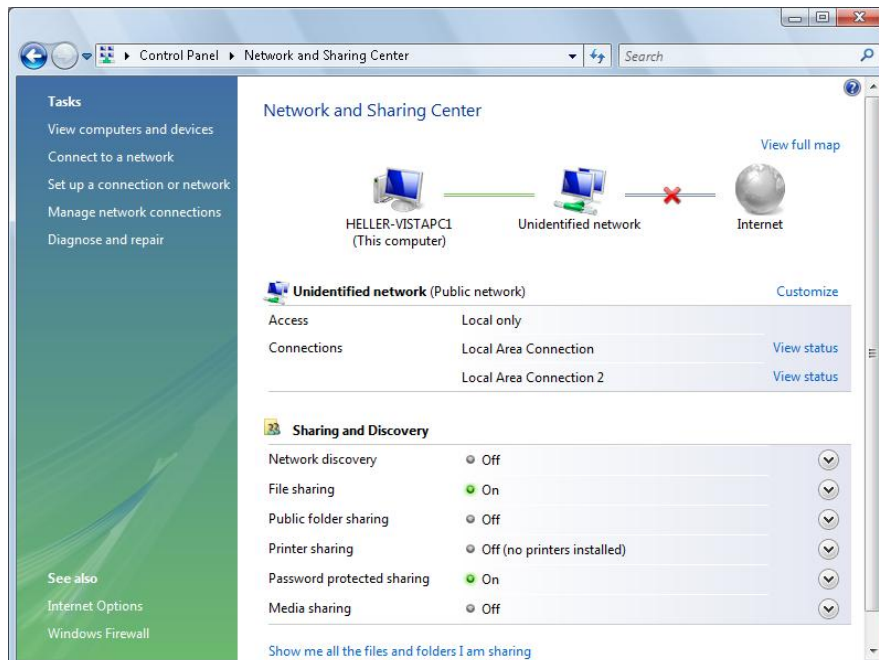
Follow steps below to set computer IP address.

1. Select Network and Sharing Center as
Start -> Control Panel -> Network and Sharing Center



, double click on the icon.

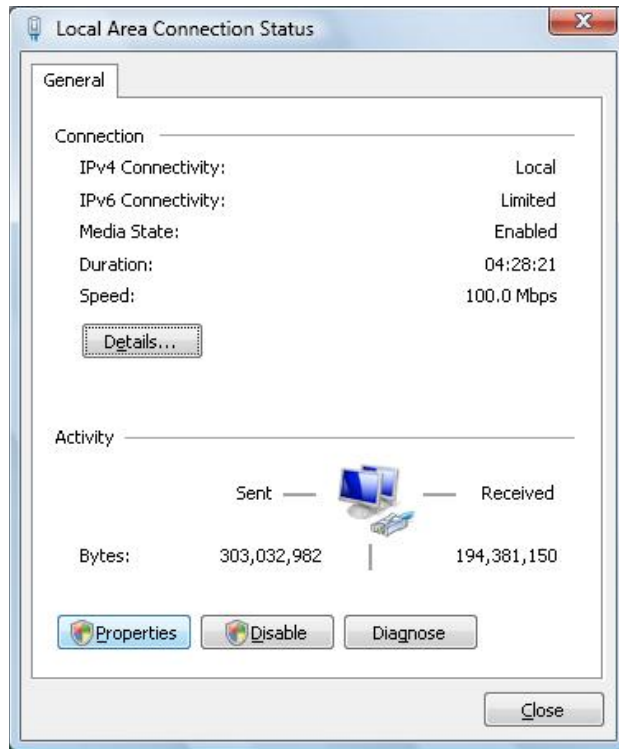
2. Click on “View status” for Local Area Connection that is used for connecting to HC2 controller.



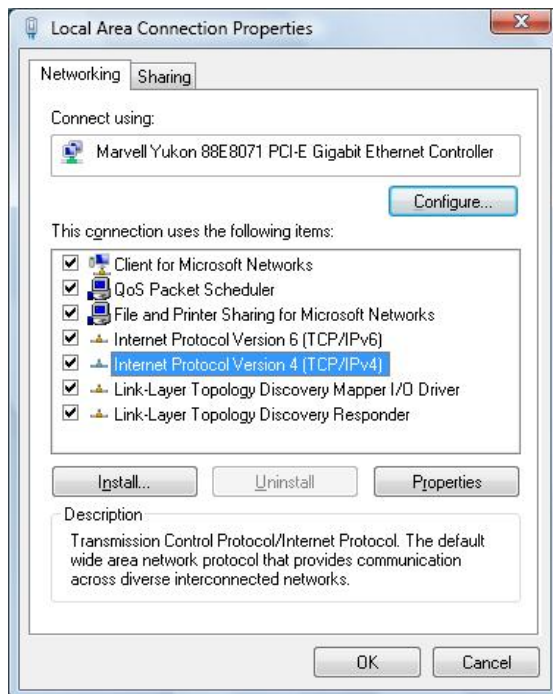
Oven Software Installation for Windows Vista (HC2 controller)

(Software version 5.0.x.x)

3. Click on “Properties” button to access LAN properties window



4. Highlight/Select “Internet Protocol Version 4 (TCP/IPv4)” and then click on “Properties”.



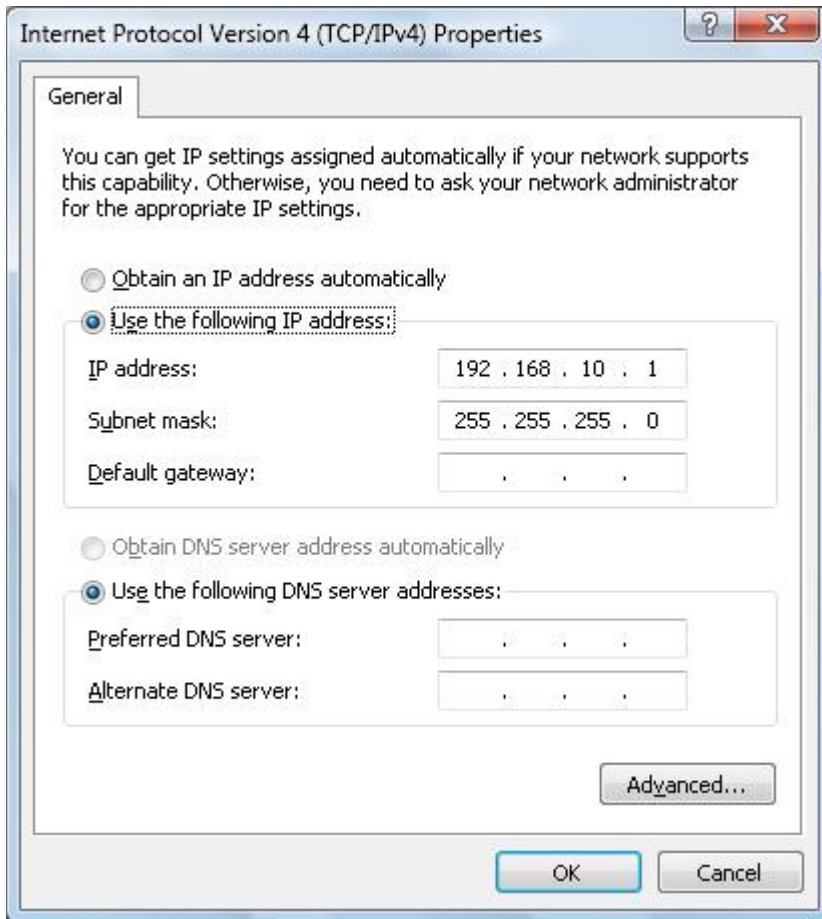
Oven Software Installation for Windows Vista (HC2 controller)

(Software version 5.0.x.x)

5. By default “Obtain an IP address automatically” is checked on; change selection to “Use the following IP address:” and set as:

IP address: 192.168.10.1

Subnet mask: 255.255.255.0



Click “OK” to save changes and close the window.

Click “OK” to close “Local Area Connection Properties” window.

Click “Close” on “Local Area Connection Status” window.

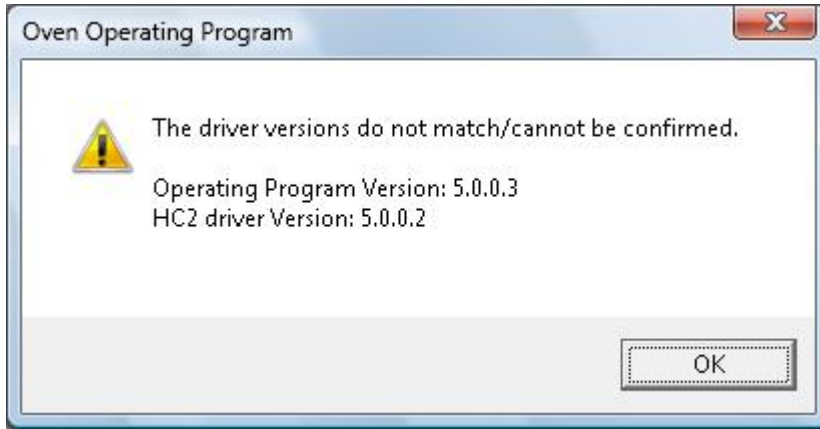
Exit/Close control panel.

Oven Software Installation for Windows Vista (HC2 controller)

(Software version 5.0.x.x)

HC2 controller driver version check:

Note: For example if oven program version 5.0.0.2 is used with older HC2 controller driver/firmware version, following message will appear during oven program version 5.0.0.3 startup,



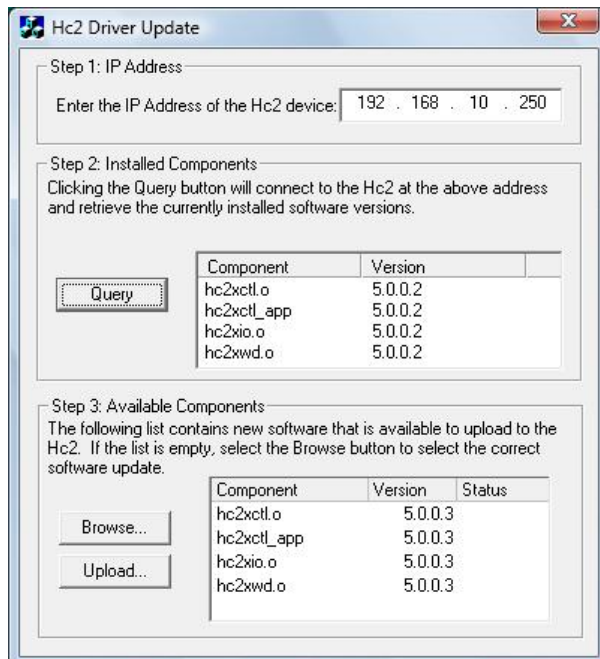
Click OK to update the HC2 controller drivers.

Driver update program will start automatically.

If program did not start, manually run “C:\Oven\Drivers\Hc2DriverUpdate.exe” program.

Make sure Oven and Oven Operating Program are not running while performing driver update. After finishing update restart power to controller by turning off and on the oven power.

Click on “**Query**” button which will list current installed driver versions from the connected HC2 controller.

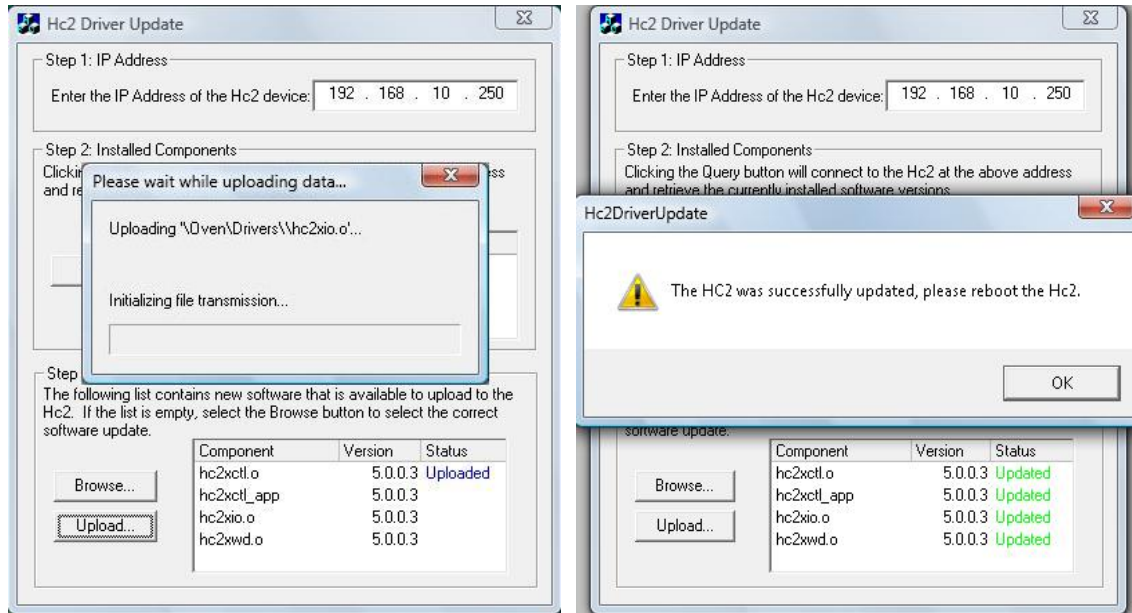


Oven Software Installation for Windows Vista (HC2 controller)

(Software version 5.0.x.x)

If installed driver version is older than available new driver version then “**Upload**” new drivers.

A process status window will show the driver update status.



Upon completion of updating all drivers, **reboot HC2 Controller** by turning off and on Oven main power.

Check program version and HC2 version when oven program is running. Both versions should match.

Oven program version and HC2 version can be checked under Help menu on Oven Operating Program.

